

Dates for your Diary *Stick this on your noticeboard or behind the mantelpiece clock*

12th February Club Night 8pm

12th March Club Night 8pm

We want to turn this into a Question & Answer evening, where any member with a query can bring it along to the club and, hopefully get an answer - or, at least - some guidance on where to go for an answer. We have some very experienced modellers among us, and all topics are up for general discussion among the members. Sad looking bits of aeroplane especially welcome.



AUCTION... AUCTION...AUCTION



9th April Club Night Auction

This is the night of the Club Auction, which is becoming increasingly popular round these parts. Items can be booked in from 5.30 and the auction proper starts at 8.15pm.

Registered Club Instructors

Bob Arrowsmith (FW power)	01245 608007
Ted Gilbert (FW power)	01245 351576
George Green (FW power)	01255 862066
Paul Green (FW power)	01702 316450
Sean O Sullivan (FW power)	01245 614101
Colin Straus (FW power)	01245 421217
Steve Vickers (FW power)	01245 269241
Terry Young (FW power)	01245 465912

BMFA Examiners

Brian Austin Chief Examiner (FW power, Glider, Heli)	01245 320587
Colin Straus (FW power, Heli)	01245 421217
Alan Bedingham (Power)	01268 457615

Representatives

Power -Kevin Thompson

01268 559350

Glider - Brian Austin

01245 320587

Helicopter - Gary Thorpe

01245 466271

Training - Sean O'Sullivan

01245 614101

Chairman: **Dave Gothard**. Vice-Chairman: **Colin Straus**. Secretary: **Steve Smith**. Treasurer **Brian Vance**.

Airborne

Chelmsford Model Flying Club Members' Newsletter Feb 2002



Next in the occasional series featuring members models. This is Dave Jones SNJ-5 Navy Harvard 'Miss Miami'. Dave says this one has taken over 20 hours of masking, painting and weathering. The masking and panels alone took more than 8 hours.

ON OTHER PAGES

January Party & Quiz Night— Pictures.....P4/5

January Quiz QuestionsP6

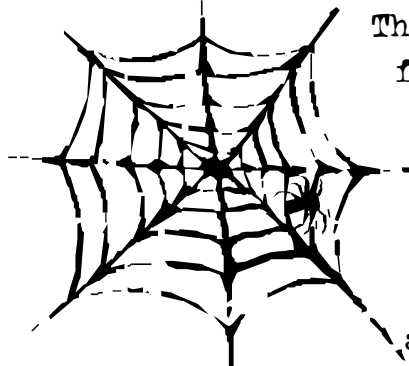
Dates for your DiaryP8

First, Can I wish everyone a belated but sincere Happy New Year.
 This is the worst of times.
 It's cold, wet and miserable up at the field, and all we've got are last summer's memories to uncover and relish.
 But already the daffodil bulbs are budding, and soon the sky over our little bit of England will resound again to the bark of glows, the swish of crow brakes and the gentle humming of the responsible electro-freaks.
 I can't wait.

Jim Hutchon



WEB WONDER



The web site is having a few access problems, so is not as up-to-date as I would like. I'm working with the previous webmaster to overcome the problems and get more news

uploaded and a few more links added. In the meantime, if you have access to the internet, check out www.CMFA.co.uk.

INITIALS

What initials could mean a piece of paper to say an aeroplane is fit to fly
 Or

A super-glue

What do the initials D/C mean on a receiver

What does PCM in a transmitter mode stand for?

What do the initials JR on radio equipment stand for?.....

What do the initials ARF (or ARTF) stand for

What does the 'P' in P47, P51, P38 etc., stand for

What does Quantas stand for

WHEN

What month traditionally is Enfield Model Club's auction

WHERE

Are the majority of the Nationals held

Where is Wings & Wheels held

ACT... CONTACT... CONTACT... CONTACT...

Let us know if you have an e-mail address to get *Airborne* electronically to keep the club's postage within reasonable limits?

If you have anything you are bursting to share with the other club members, or anything to sell, let me, Jim Hutchon, know on 01245 601999, e-mail j.hutchon@blueyonder.co.uk.

We have a 'For Sale' section so members can clear their lofts

The January Quiz Questions

No prizes this time, Answers in the next issue

QUESTIONS

ANSWERS



WHO

Flies at Flambards Farm

Whose club magazine is called Airborne

Is the editor of RCM&E.....

Started the PAW engine works

Imports Super Tigre engines into the UK

Designed the WOT4

Who is the designer of the Laser engines

WHAT

Is the name of the BMFA HQ building

Did the magazines QFI and EFI do in March 2002

What drove the earliest RC escapements

What is a stupid person and traditionally applied to tissue

On what would you find FP148, or NES 507, or HS-81

What was the spruce goose



Robert Thompson (Left) looking rather pleased with his latest trophy. And so he should, Robert was presented with the trophy for the most improved newcomer at the January meeting, for the not inconsiderable task of getting his 'A' and his 'B' within months in what was, effectively, his first full flying season.

Well done Robert, and all the other new 'B' certificate winners. Hopefully, some will come forward as instructors and examiners to take the load off the small, dedicated bunch who give up their own flying to train and pass others.

POWER COMPETITIONS— IDEAS WANTED



Limbo— from the Ripmax Simulator site
© Ripmax

OUR NEW power representative Kevin Thompson is busy beavering away on ideas for power competitions for the coming season.

But he would like anyone who has experience of competitions at other clubs to contact him with further ideas.

Anything that took your fancy, or you wish you could try again will be welcome.

Contact him on:

01268 559350

January Party and Quiz Night.

The party was a great success, with food and drink for all, though it would have been nice to see a few more faces. Full marks to Brian and Steve for organising the eats and drinks. Colin brought the tail of his Globemaster along, and we all took turns walking under it, feeling like Cap'n Ahab with Moby Dick.

The quiz was good fun too, once the rather inept quizmaster understood the difference between Flambards and Tabrums Farms. The worthy winner was Colin Straus, who, despite being teetotal, pocketed a very drinkable Australian Red as his prize. The questions are included in this issue. Answers in next one.



Walkies!



Ted Gilbert— who's helping Colin put together the giant Globemaster - caught here trying to climb into the rear fuselage for a kip



... and we all took turns walking under it— except Dave Gothard of course, who bumped his head

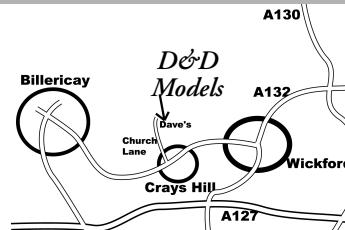
Note

This is the last newsletter on the 2002 Membership List. If you haven't already signed up for 2003 this will be your last newsletter. How could you possibly miss it?

Sign up now and join the gang.

ADVERT

D&D Models "Where the kettle's always on!"



Unit 3 Riverbank, Church Lane
Crays Hill, Billericay CM11 2UN

01268 52 39 23 / 07860 48 56 64

Stockists for:

*Ripmax J. Perkins Irvine Engines Flair Products
R.C.V. Engines Enya Engines Amerang Ansa*

**Now open
Evenings
6.30-9pm
& Saturday**